

Muscologiae Linn

1BA 129

Arctia arctica

Note important to Selkirkian

Paris 8 juin 1905
53 me Condorcet

Cher Monnier;

Après avoir retrouvé mes notes de recherches de 1872 je me suis rendu auprès de M. Blochet pour vérification.

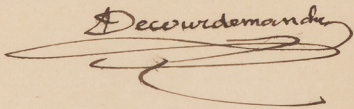
Comme conclusion, le manuscrit avec airs notés est le 292 de l'ancien fonds turc. Permettez-moi de vous signaler en outre:

1° le n° 599 du supp. turc, lequel donne un certain nombre de notes;

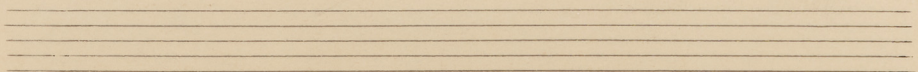
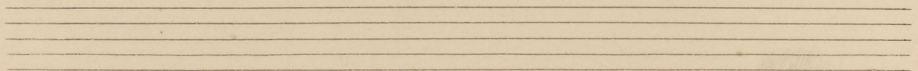
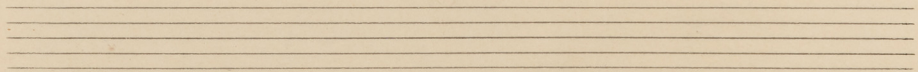
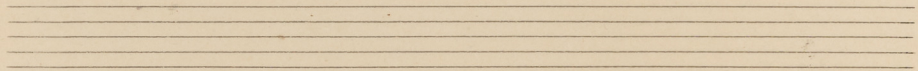
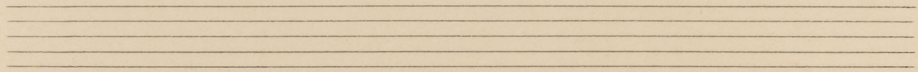
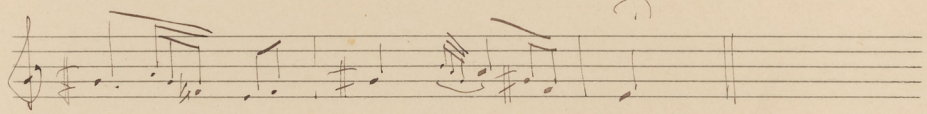
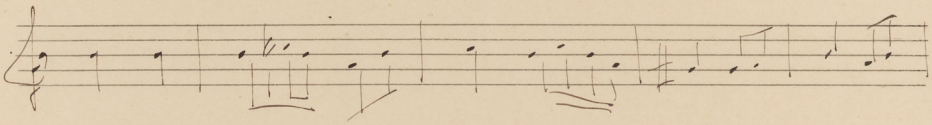
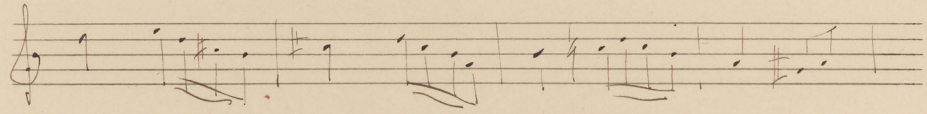
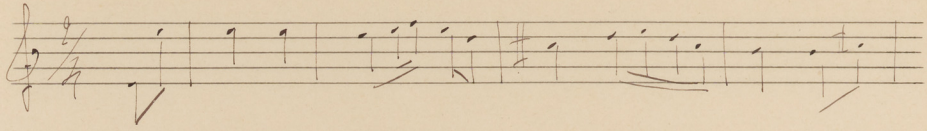
2° le n° 4023 du fonds français, nouvelles acquisitions: Essai sur la musique orientale; ce dernier non vérifié

Bien à vous

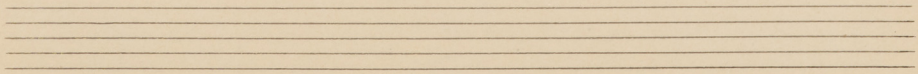
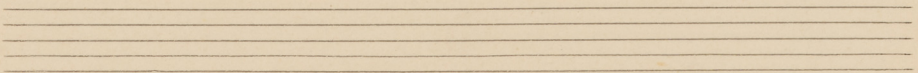
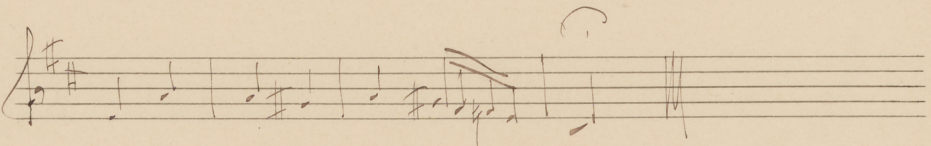
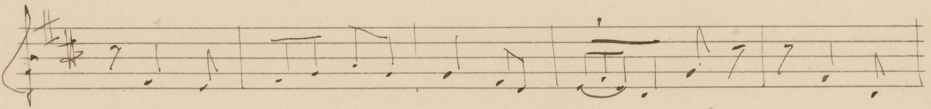
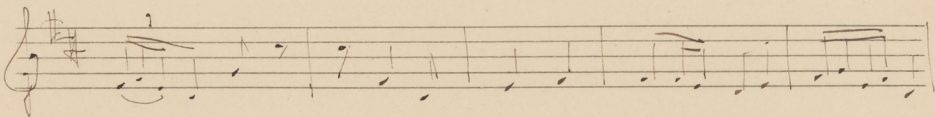
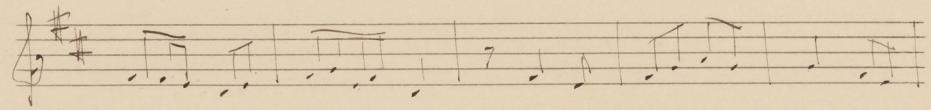
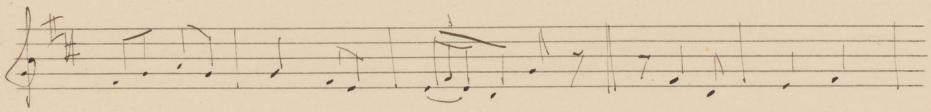
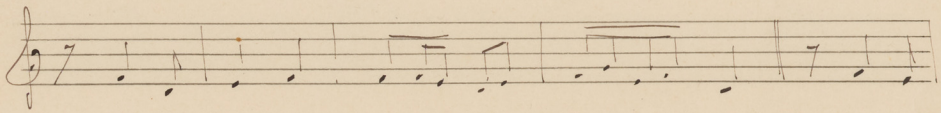
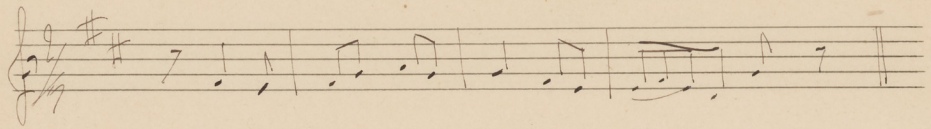
Decourdemanche



Adieu el Marissa
chant saouir.

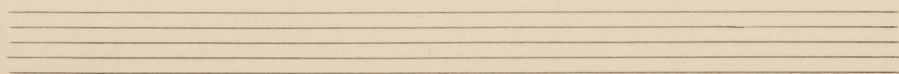
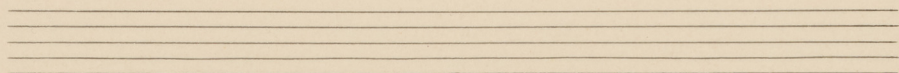
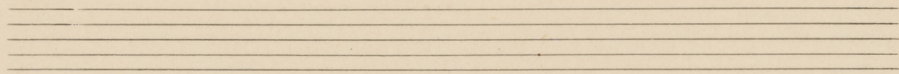
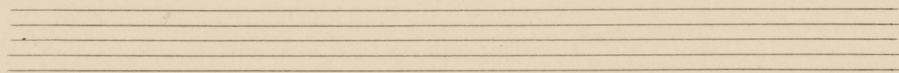
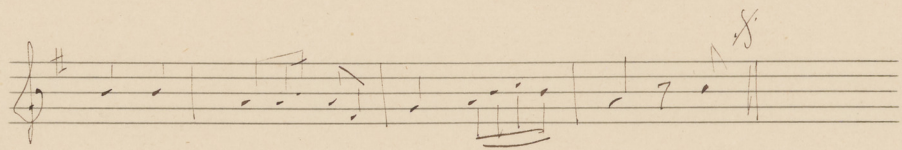
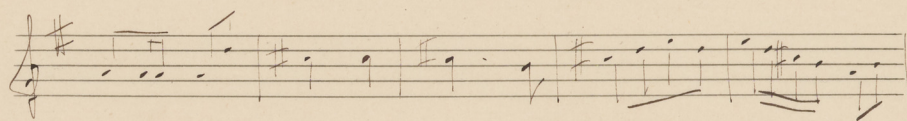
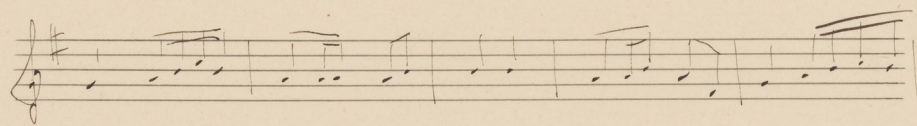
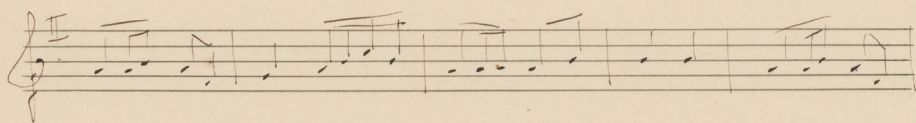
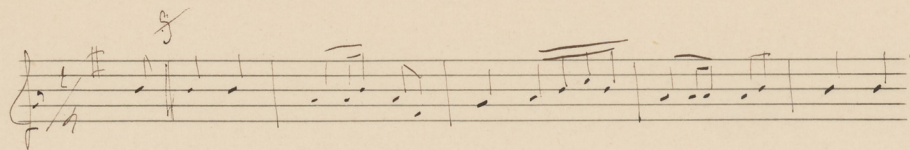


Ya bitah el Wana
Chanson populaire arabe



Ya Sahi el Labri

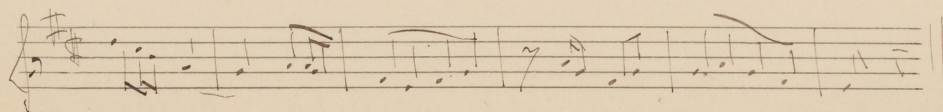
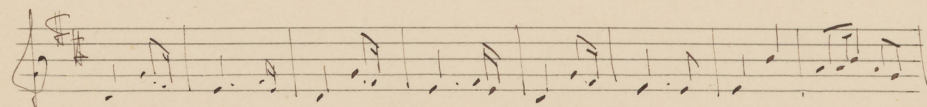
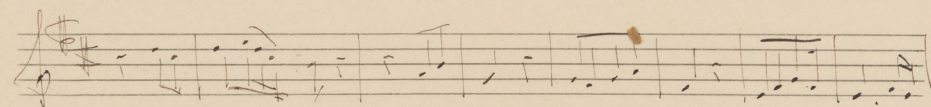
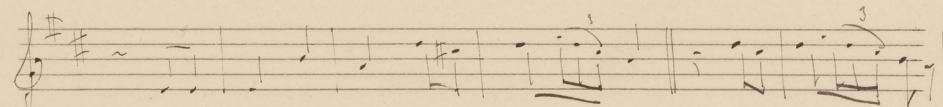
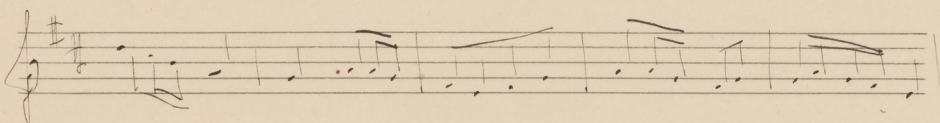
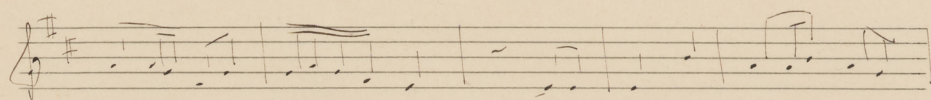
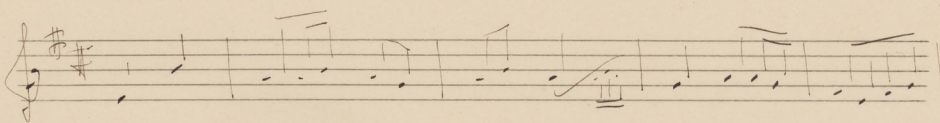
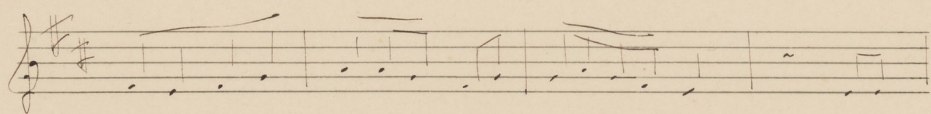
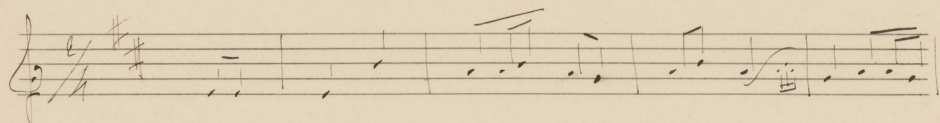
Musique arabe



Geno. Geno

chanson populaire arabe

(noté par M^le. Emile Masset)



Bade el mare Lah
un des hymnes Khebrivians.

A handwritten musical score for a piece titled "Bade el mare Lah" (one of the Khebrivian hymns). The score is written on ten staves, each with a treble clef and a 2/4 time signature. The notation includes various rhythmic values such as eighth and sixteenth notes, rests, and beams. There are several dynamic markings: *mf* (mezzo-forte) at the beginning of the first staff, and *8^o*, *7^o*, *6^o*, *5^o*, and *4^o* (likely indicating fingerings or specific performance techniques) placed above the notes on subsequent staves. The handwriting is in dark ink on aged, slightly yellowed paper.

Handwritten musical notation on a single staff, featuring a treble clef and a key signature of one sharp (F#). The notation includes a series of eighth and sixteenth notes, some beamed together, and a dynamic marking of *pc* (pianissimo) above the staff.

Handwritten musical notation on a single staff, continuing the piece with similar rhythmic patterns and a dynamic marking of *pc* above the staff.

Handwritten musical notation on a single staff, showing a continuation of the melodic line with various note values and rests.

Handwritten musical notation on a single staff, featuring a dynamic marking of *pc* and a series of notes with stems pointing upwards.

Handwritten musical notation on a single staff, concluding the piece with a final note and a fermata-like flourish.

Empty musical staff.

Empty musical staff.

Empty musical staff.

Empty musical staff.

Empty musical staff.