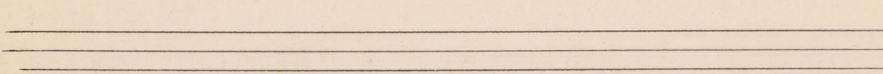
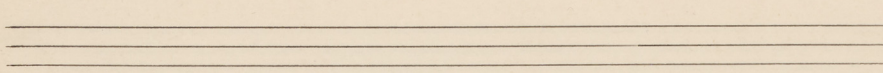
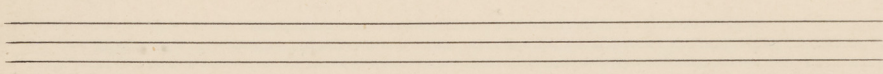
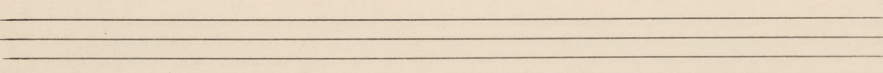
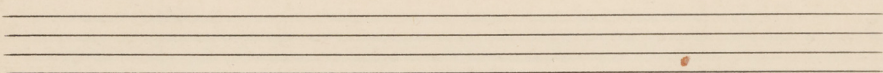
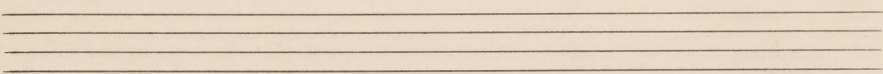
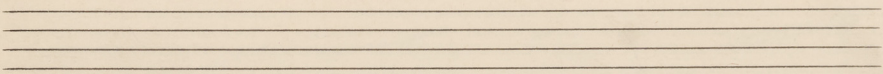
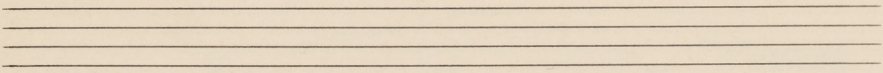
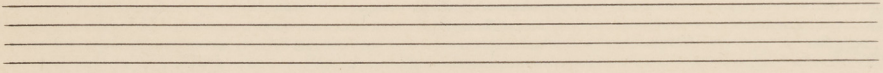
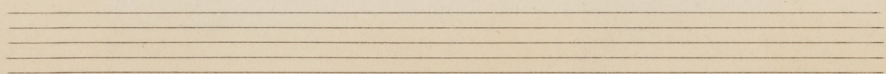
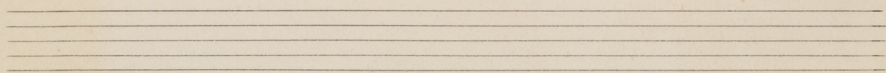
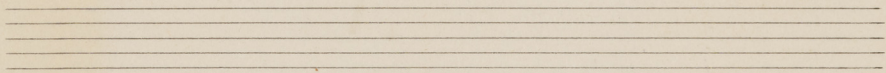
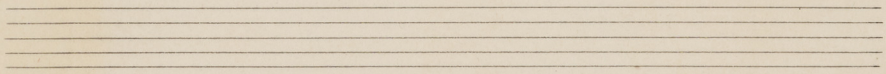
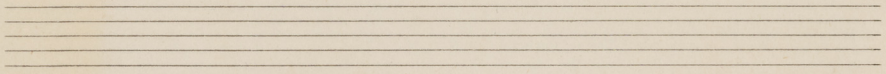
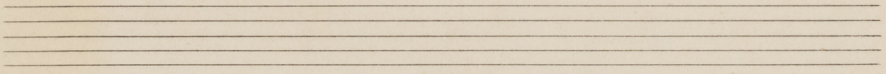
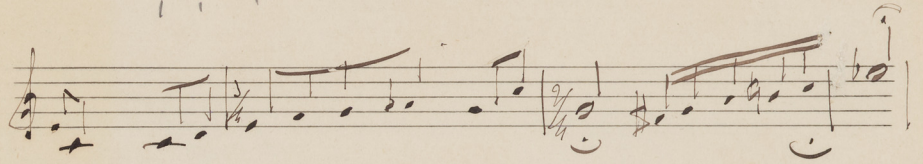
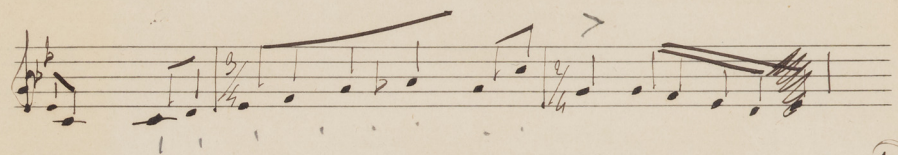
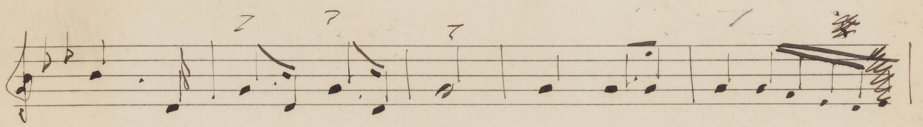
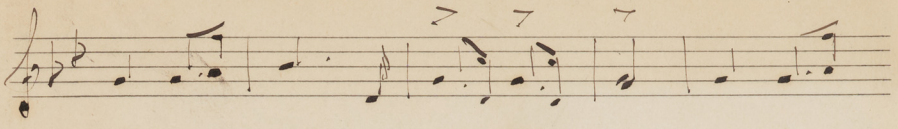


10A128

Musique algérienne -



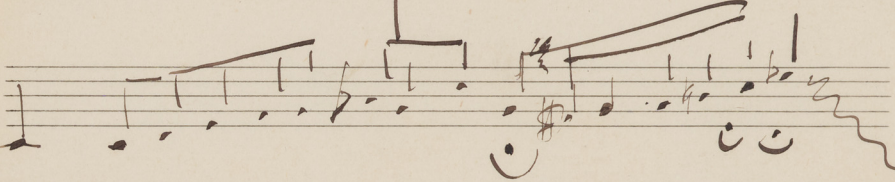
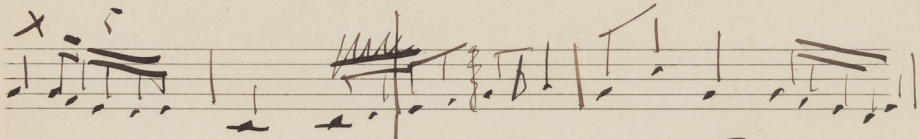
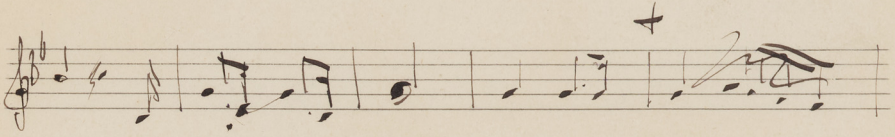
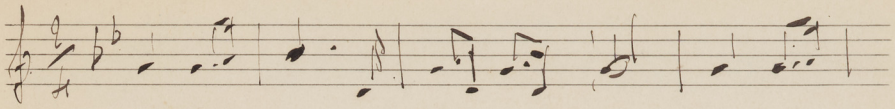


Handwritten musical notation on two staves. The top staff is in treble clef and the bottom in bass clef. The music features a melodic line with notes and rests, and a bass line with chords and arpeggios. Dynamic markings include *ff*, *mp*, and *p*. A *si* note is marked above the final note of the top staff.

Handwritten musical notation on two staves. The top staff is in treble clef and the bottom in bass clef. The music features a melodic line with notes and rests, and a bass line with chords and arpeggios. Dynamic markings include *ff*, *p*, and *f*. A *poco meno* marking is present below the bass staff.

chants dunes, pas une herbe, pas un oiseau;
très haut.

chanté par un yahi ~~chastard~~, suivant à cheval
sur le chemin de Taibet-el-Jebbia! -



Bas

